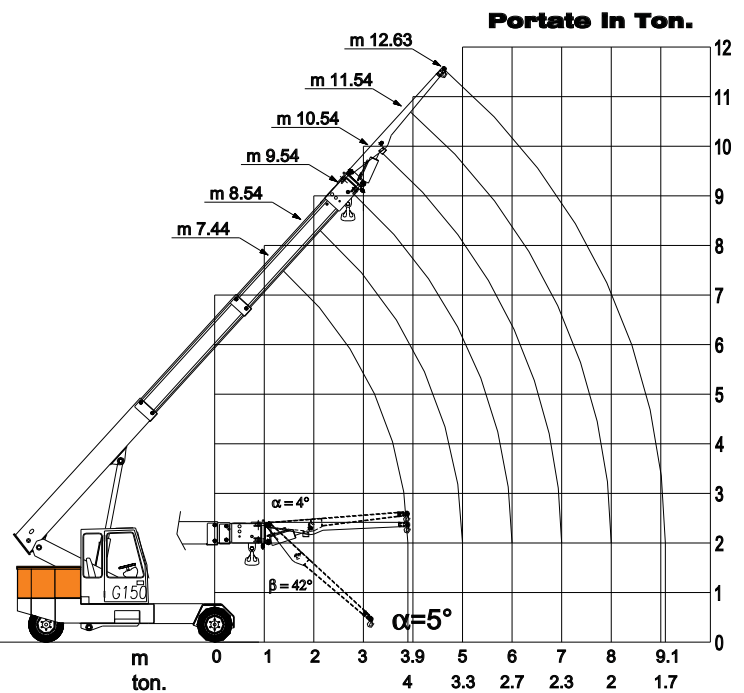
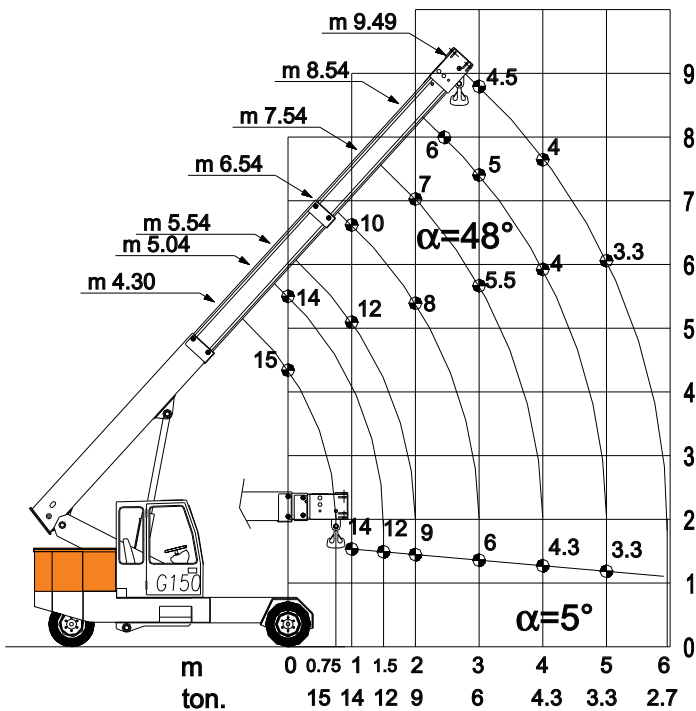
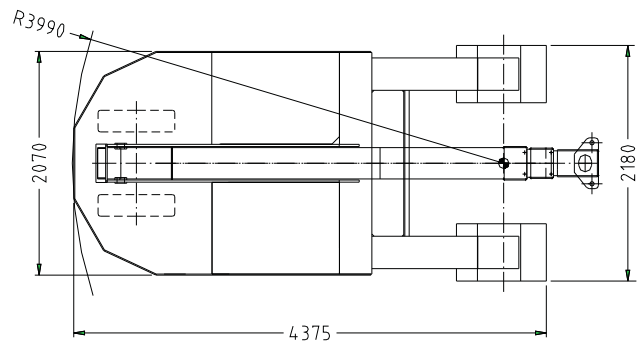
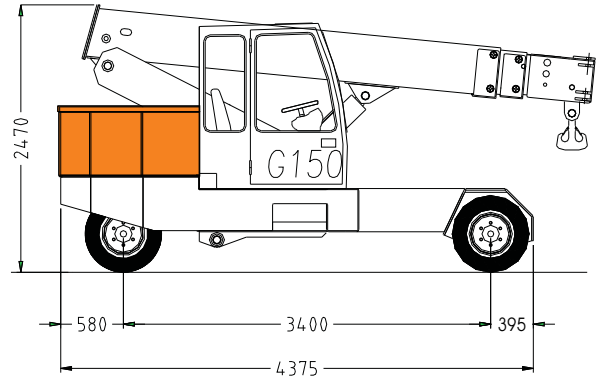




GALIZIA
di GALIZIA & VERCELLI

**P I C K
AND CARRY
C R A N E S**



FALC. IDR/HYDRAULIC JIB. P.MAX 4000 kg L= 3140 mm

G150

GALIZIA S.n.c.
Di Galizia & Vercelli
S.s. 10 Km 70

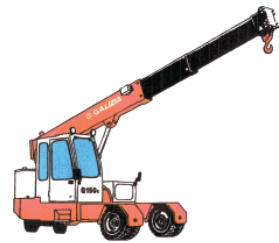
14034 Castello di Annone (Asti) - ITALY

Tel. 0141 - 401256 Fax 0141 - 401878

E-mail: info@galiziagru.com

www.galiziagru.com

**M A X
15.000 Kg**



CHASSIS:

Bearing body made of electro-welded steel plate.

BOOM:

Made of high resistance plate. The first boom is hinged to the upright, its two jibs are hydraulically extractable, through a cylinder with piloted cutoff valve for a max length of 6 m from wheel center. Its two jibs slide one on the other through wear resistant guide shoes.

G150

ENGINE:

DIESEL	VM or Yanmar
TYPE	D704LE turbo or Yanmar
CYLINDERS	4
COOLING	WATER
C.C.	2776 cm ³
POWER	62 kW (84 CV)
Rpm	3000
FUEL TANK CAPACITY	80 litri

TRANSMISSION:

HYDROSTATIC transmission, through variable closed-circuit pump (AUTOMOTIVE system), hydraulic engine, couple of gear reductions on rear axle.

SERVICE BRAKE:

Pedal Hydraulic service brake, n°4 drum brakes on front wheels.

PARKING BRAKE:

Mechanical type working on front drum brakes.

STEERING :

Hydraulic total steering (180°) system

HYDRAULIC INSTALLATION:

One driven gear-pump, proportional distributor remote-controlled by a joystick (with man presence button) for precise and gradual drive of the cylinder for boom lifting and of the cylinder for jibs' extraction.

PERFORMANCE:

Max speed. 14 Km/h

WHEEL:

Front N°4 250 - 15 superelastic type
Rear N°2 250 - 15 superelastic type

SAFETY DEVICE:

Hydraulic oil max pressure valve, balancing and cut-off valves on cylinders, flash-light and backing acoustic signaler, operator seat man presence sensor. Electronic load limiting device with display

WEIGHT: about 12900 kg

OPTIONALS:

-JIB, HYDRAULIC WINCH

G150E

MOTOR:

ELECTRIC	C.C.
POWER	16 kW
VOLTAGE	80 V

TRANSMISSION:

By differential gear and couple of gear reductions on rear axle, electronic speed control (MOSFET) with energy regeneration and programmable microprocessor.

SERVICE BRAKE:

Hydraulic type working, servo brake and n°4 drum brakes on front wheels, and brake on drive.

PARKING BRAKE:

Mechanical type working on front wheels.

STEERING :

Hydraulic total steering system (180°) and 2 kW motor-driven pump.

HYDRAULIC INSTALLATION:

On 15 kW motor driven gear-pump, proportional distributor remote-controlled by a joystick (with man presence button) for precise and gradual drive of the cylinder for boom lifting and of the cylinder for jibs' extraction.

ELETTRICAL INSTALLATION:

Two Accumolator battery with 80 V voltage and capacity of 720Ah.

PERFORMANCE:

Max speed 7 Km/h

GALIZIA cranes are manufactured in compliance with the CEE regulation.

The Company GALIZIA reserves the right to change the present specifications without previous.